

Lot 325 Willis Hill Estates

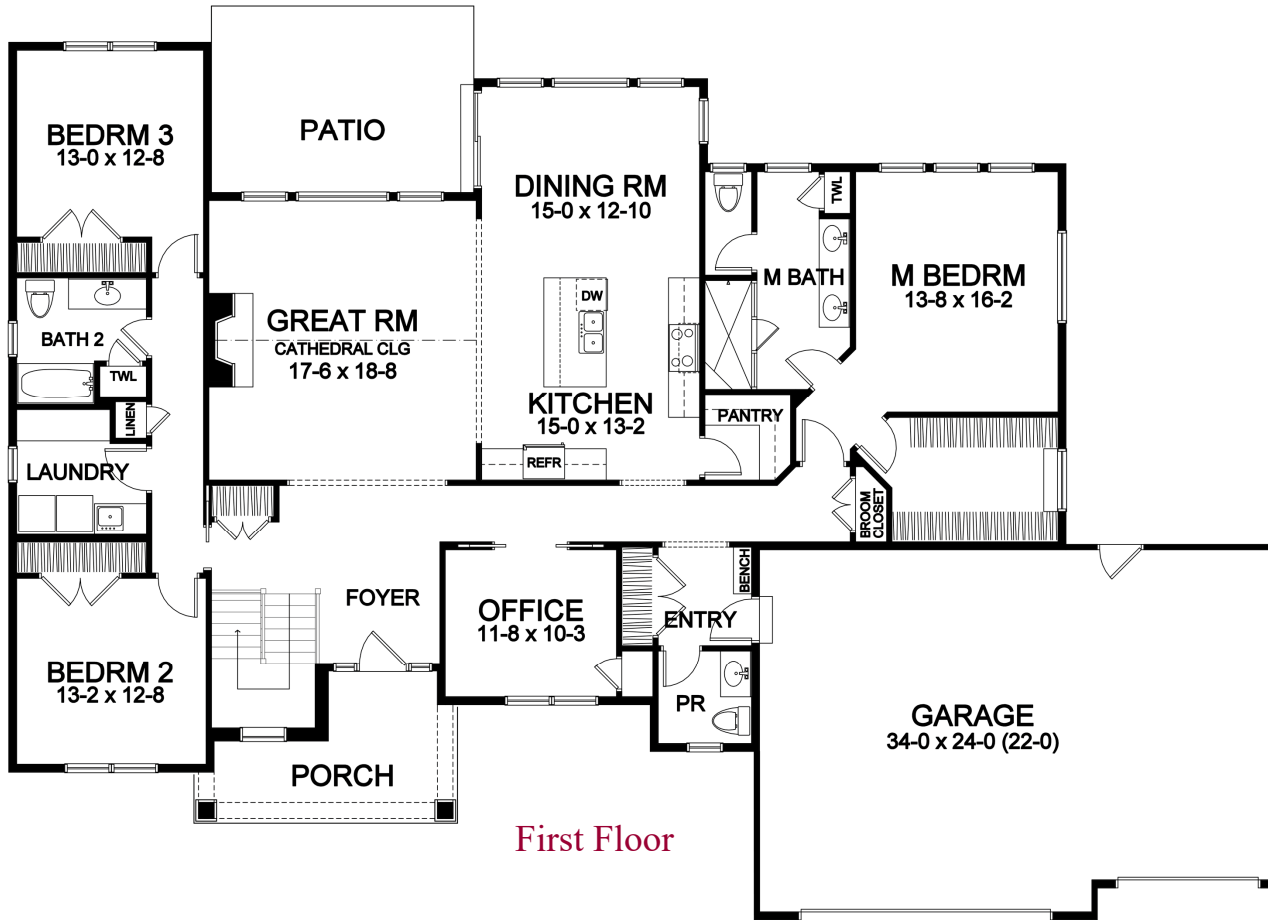


2,402 Square Foot Ranch

Willis Hill Estates

Arbordale Lane

1025 Arbordale Lane (Lot 325)
Plan Details



First Floor

- Square Footage:
First Floor 2,402
Total 2,402
- Three Car Front Load Garage with Carriage Style Doors
- Shake Siding and Stone Accent Front
- Three Bedrooms; 2-1/2 Baths
- Private Office
- Great Room with Gas Fireplace and High Cathedral Ceiling
- Dining Room Open to Kitchen and GR
- Hardwood Floors in Foyer, Great Room, Kitchen, Dining Room, Pantry, and Bedroom Hall
- Master Suite with Large Walk-in Closet, Toilet Room, and Double Vanity
- Built-In Bench Seat in Garage Entry
- Ceramic Tile Floors in Baths, Powder, Garage Entry, and Laundry
- Central Staircase to Optional Finished Lower Level
- Professional Landscaping
- 96%+ Efficient Heating/Cooling System for Superior Comfort and Efficiency



585-586-0953

Front elevation rendering is an approximation of final exterior details. Dimensions shown are approximate and not final. All dimensions are subject to change prior to or during construction © Copyright Patrick J. Morabito, AIA Architect. These drawings may not be reproduced in any form without written permission from Patrick J. Morabito, AIA Architect and Woodstone Custom Homes, Inc.