

# *Lot 34 Dorchester Park*



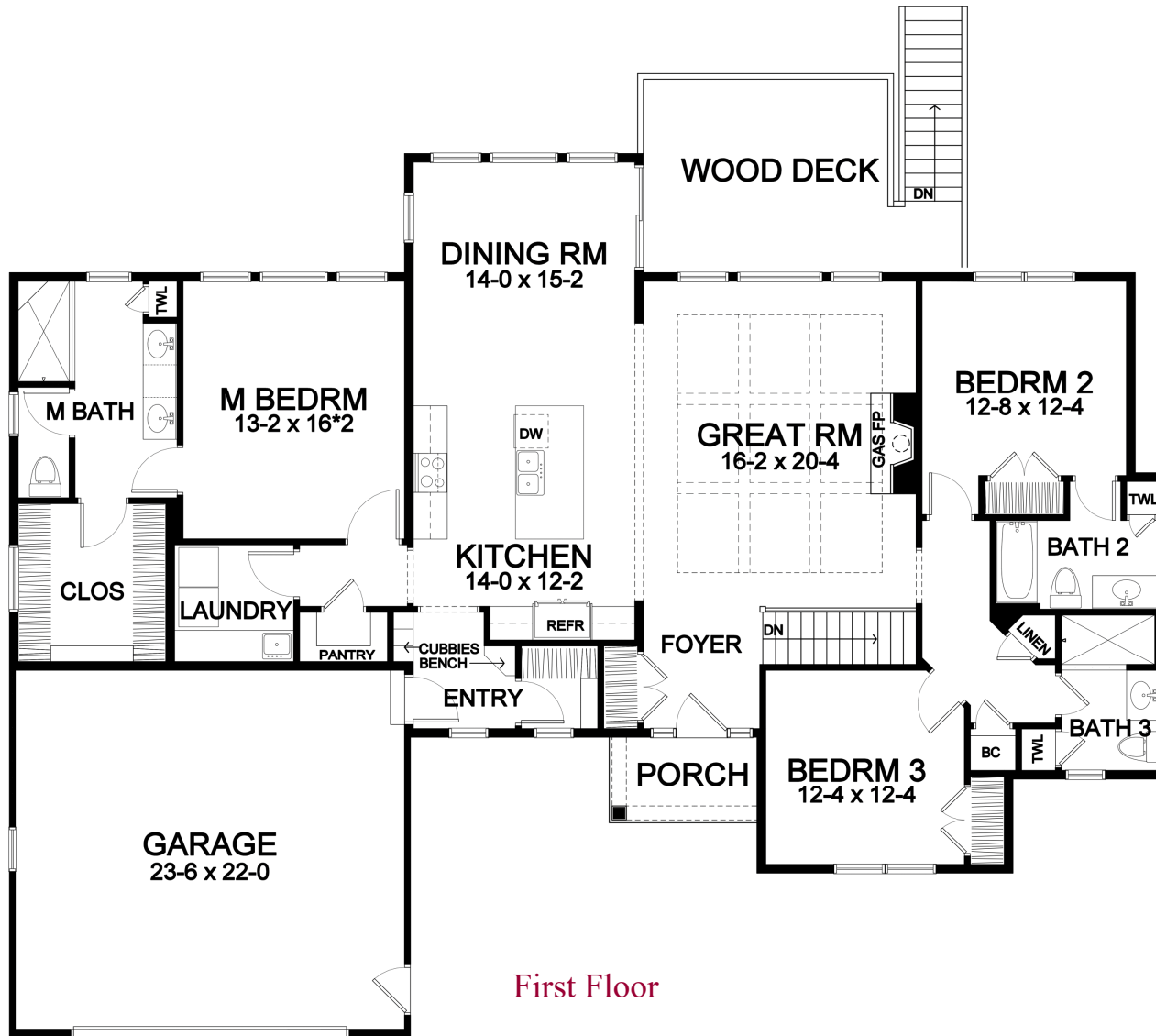
*2,022 Square Foot Ranch*



# DORCHESTER PARK

*1310 Grayson Drive (Lot 34)*  
*Plan Details*

- Square Footage:  
First Floor 2,022  
Total 2,022
- Two Car Front-Load Carriage Door Garage
- Three Bedrooms; Three Bathrooms
- Great Room with Gas Fireplace and High Coffered Beam Ceiling
- Large Laundry Room Near Master Suite
- Dining Room Open to Kitchen and GR
- Hardwood Floors in Foyer, Kitchen, Dining Room, Great Room, Bedroom Halls, and Walk-In Pantry
- Master Suite with Large Walk-in Closet, Toilet Room, and Double Vanity
- Cubbies and Bench Seat in Garage Entry
- Ceramic Tile Floors in Baths and Laundry
- Central Staircase to Optional Finished Lower Walk-Out Level with Sliding Door and Six Egress Windows
- Professional Landscaping
- Rear Azek Deck with Vinyl Railing and Stairs to Rear Yard
- 96%+ Efficient Heating/Cooling System for Superior Comfort and Efficiency



First Floor

*Front elevation rendering is an approximation of final exterior details. Dimensions shown are approximate and not final. All dimensions are subject to change prior to or during construction. © Copyright Patrick J. Morabito, AIA Architect. These drawings may not be reproduced in any form without written permission from Patrick J. Morabito, AIA Architect and Woodstone Custom Homes, Inc.*



**585-586-0953**