

Lot 201 Willis Hill Estates

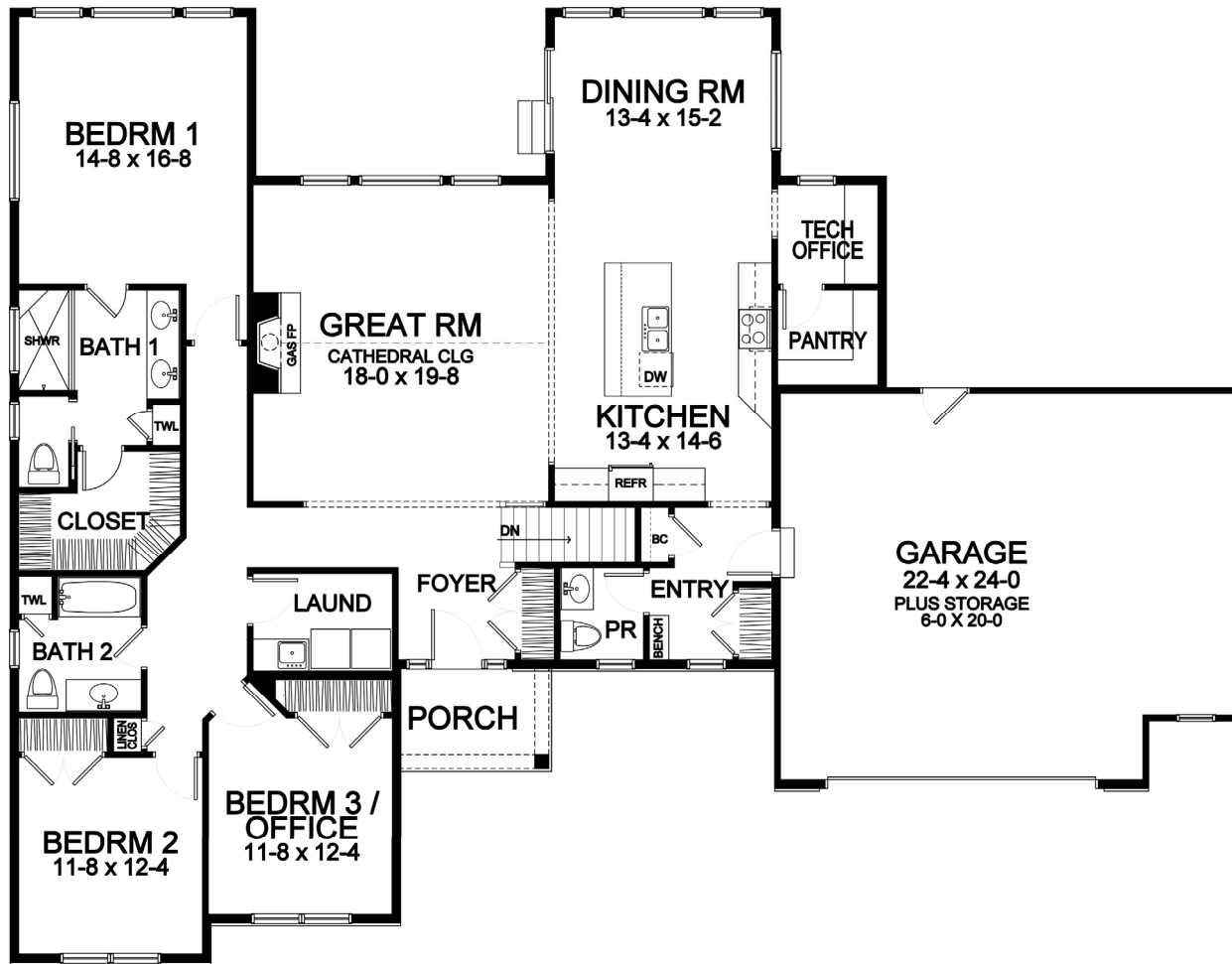


2,105 Square Foot Ranch

Willis Hill Estates

*1023 Walden Hollow (Lot 201)
Plan Details*

- Square Footage:
First Floor 2,105
Total 2,105
- Two Car Front-Load Carriage Door Garage
- Stone and Shake Siding Front Accents
- Three Bedrooms; 2-1/2 Baths
- Great Room with Gas Fireplace and High Cathedral Ceiling
- Office/Bedroom 3
- Laundry Room in Bedroom Wing
- Dining Room Open to Kitchen and GR
- Butler's Pantry and Walk-In Pantry
- Hardwood Floors in Foyer/Hall, Kitchen, Dining Room, Great Room, and Pantry
- Master Suite with Large Walk-in Closet, Toilet Room, and Double Vanity
- Bench Seat in Garage Entry
- Ceramic Tile Floors in Baths and Laundry
- Central Staircase to Optional Finished Lower Level
- Professional Landscaping and Rear Patio
- 96%+ Efficient Heating/Cooling System for Superior Comfort and Efficiency



First Floor

Front elevation rendering is an approximation of final exterior details. Dimensions shown are approximate and not final. All dimensions are subject to change prior to or during construction. © Copyright Patrick J. Morabito, AIA Architect. These drawings may not be reproduced in any form without written permission from Patrick J. Morabito, AIA Architect and Woodstone Custom Homes, Inc.



585-586-0953