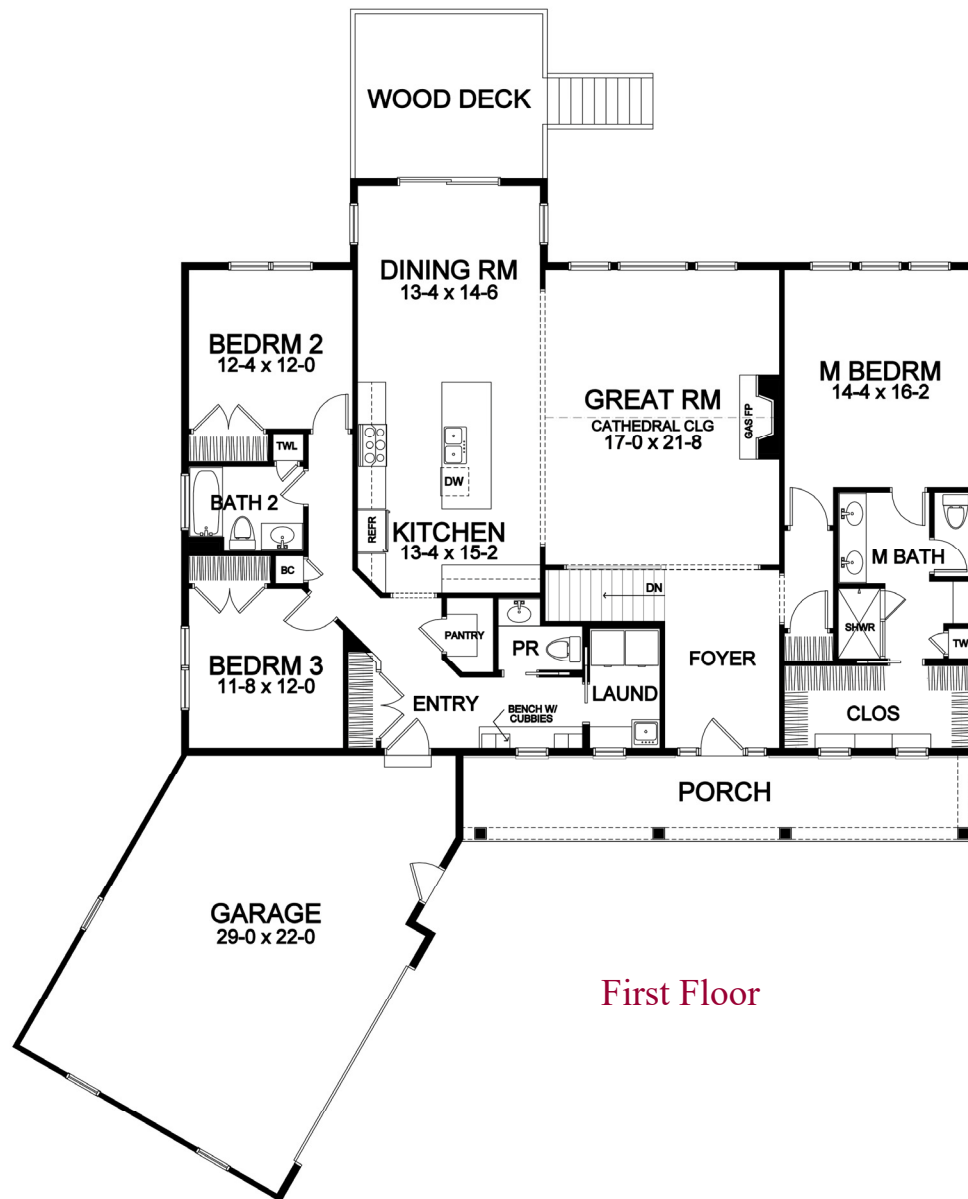


# *Woodstone Custom Homes*



## *Ranch Portfolio Plan - 2,079*





First Floor

### *Ranch Portfolio Plan - 2,079 Plan Details*

- Square Footage:  
First Floor 2,079  
Total 2,079
- Two Car Angle-Load Garage with Storage and Carriage Style Door
- Shake Siding and Stone Accent Front
- Three Bedrooms; 2-1/2 Baths
- Great Room with Gas Fireplace and High Cathedral Ceiling
- Laundry Room off of Garage Entry
- Dining Room Open to Kitchen and GR
- Hardwood Floors in Foyer, Kitchen, Dining Room, Great Room, and Bedroom Hall
- Master Suite with Large Walk-in Closet, Toilet Room, and Double Vanity
- Built-In Cubbies and Bench Seat in Garage Entry
- Ceramic Tile Floors in Baths, Garage Entry and Laundry
- Central Staircase to Optional Finished Lower Level with Four Egress Windows
- Professional Landscaping
- 96%+ Efficient Heating/Cooling System for Superior Comfort and Efficiency

Front elevation rendering is an approximation of final exterior details. Dimensions shown are approximate and not final. All dimensions are subject to change prior to or during construction. © Copyright Patrick J. Morabito, AIA Architect. These drawings may not be reproduced in any form without written permission from Patrick J. Morabito, AIA Architect and Woodstone Custom Homes, Inc.



585-586-0953