

Woodstone Custom Homes

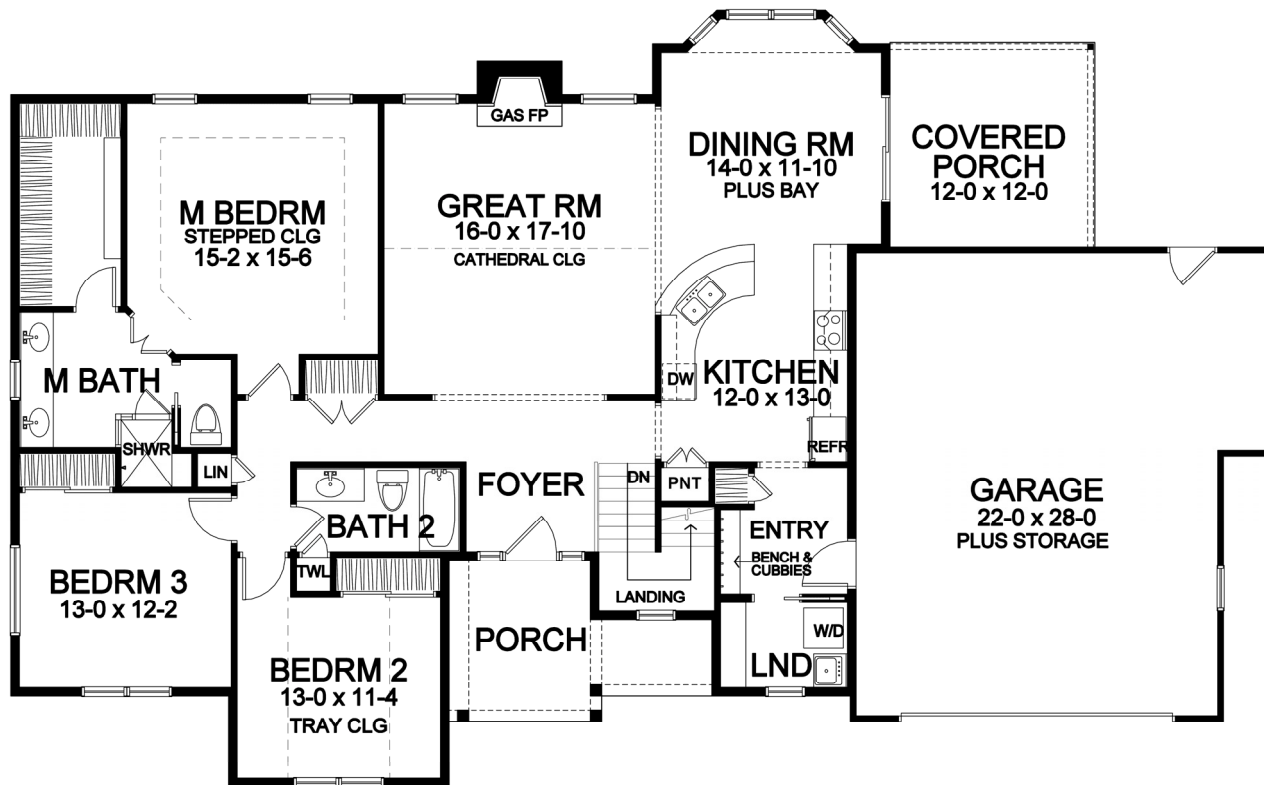


Ranch Portfolio Plan — 1,818

Woodstone Custom Homes, Inc. • 15 Fishers Road, Suite 114 • Pittsford, New York 14534 • homesbywoodstone.com

STONINGTON RIDGE

Ranch Portfolio Plan - 1,818 Plan Details



First Floor

- Square Footage:
First Floor 1,818
Total 1,818
- Two Car Front-Load Garage with Storage
- Stone and Shake Siding Accent Front
- Three Bedrooms; Two Baths
- Great Room with Gas Fireplace
- Laundry Room
- Dining Room Open to Kitchen/GR
- Covered Rear Porch
- Hardwood Floors in Foyer, Kitchen, Dining Room, and Pantry
- Master Suite with Large Walk-in Closet, Toilet Room, and Double Vanity
- Bench Seat in Entry, with Optional Built-in Cubbies
- Ceramic Tile Floors in Entry, Baths, and Laundry Room
- Optional High Ceilings in Great Room and Master Bedroom
- Central Staircase to Optional Finished Lower Level
- 96%+ Efficient Heating/Cooling System for Superior Comfort and Efficiency

*Dimensions shown are approximate and not final. All dimensions are subject to change prior to or during construction
© Copyright Patrick J. Morabito, AIA Architect. These drawings may not be reproduced in any form without written permission from Patrick J. Morabito, AIA Architect and Woodstone Custom Homes, Inc.*



585-586-0953