

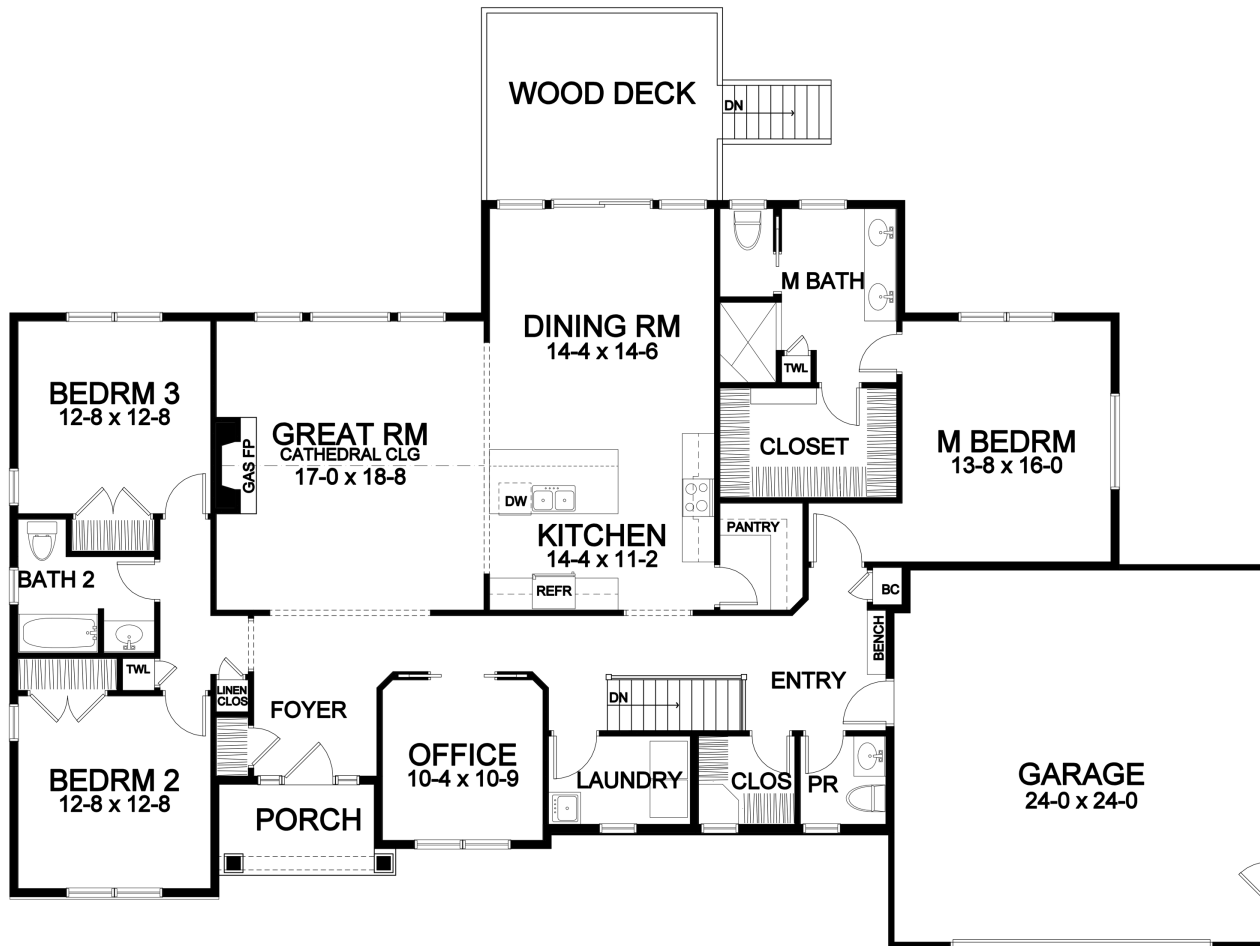
Lot 26 Dorchester Park



2,221 Square Foot Ranch

DORCHESTER PARK

*1328 Grayson Drive (Lot 26)
Plan Details*



First Floor

- Square Footage:
First Floor 2,221
Total 2,221
- Two Car Front-Load Carriage Door Garage
- Vertical Siding and Stone Accent Front
- Three Bedrooms; 2-1/2 Baths
- Great Room with Gas Fireplace and High Cathedral Ceiling
- Private Office
- Laundry Room off of Garage Entry
- Dining Room Open to Kitchen and GR
- Hardwood Floors in Foyer, Kitchen, Dining Room, Great Room, Bedroom Hall, Garage Entry and Pantry
- Master Suite with Large Walk-in Closet, Toilet Room, and Double Vanity
- Bench Seat in Garage Entry
- Ceramic Tile Floors in Baths and Laundry
- Central Staircase to Optional Finished Lower Level with Five Egress Windows
- Professional Landscaping
- Rear Azek Deck with Vinyl Railing
- 96%+ Efficient Heating/Cooling System for Superior Comfort and Efficiency



585-586-0953

Front elevation rendering is an approximation of final exterior details. Dimensions shown are approximate and not final. All dimensions are subject to change prior to or during construction © Copyright Patrick J. Morabito, AIA Architect. These drawings may not be reproduced in any form without written permission from Patrick J. Morabito, AIA Architect and Woodstone Custom Homes, Inc.