

Lot 41 Dorchester Park



2,746 Square Foot Two-Story

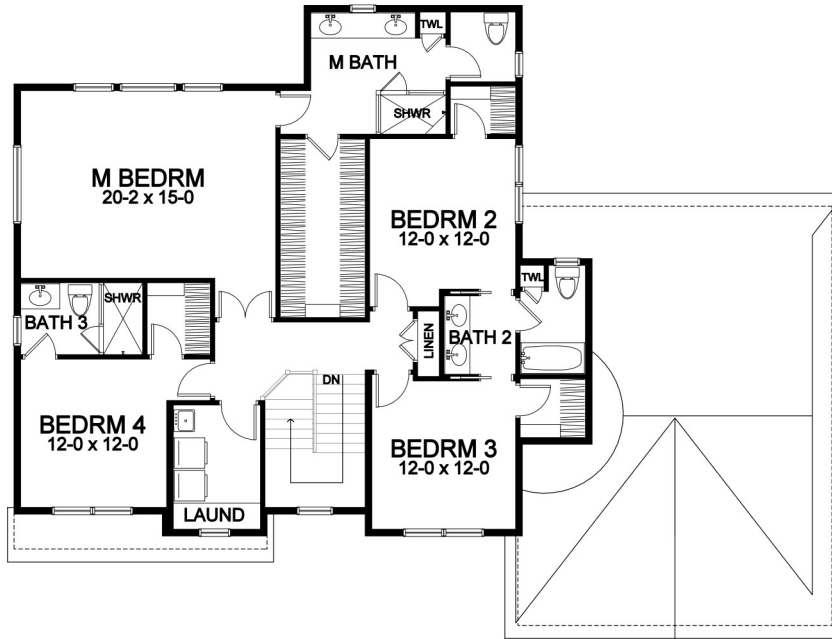
DORCHESTER PARK

*1294 Grayson Drive (Lot 41)
Plan Details*

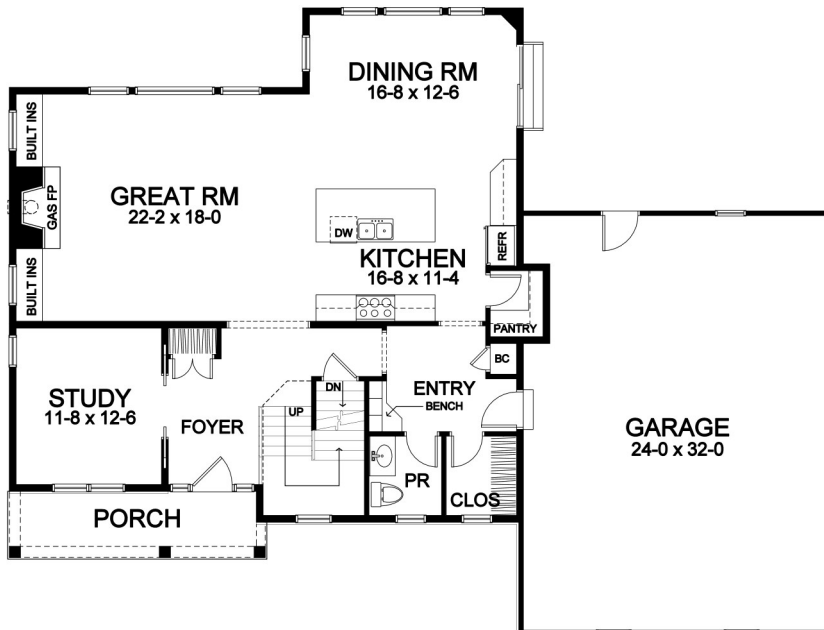
- Square Footage:

First Floor	1,343
Second Floor	1,403
Total	2,746
- Three Car Side-Load Garage
- 13-course basement
- Stone and Vertical B&B Accent Front
- Paving Stone Walk and Patio
- Four Bedrooms; 3-1/2 Baths
- Great Room with Gas Fireplace/Built-ins
- Study off Foyer
- Walk-in Pantry
- Large Dining Room Open to Kitchen and Great Room
- Hardwood Floors in Foyer, Kitchen, Dining Room, Great room, and Pantry
- Master Suite with Large Closet, Toilet Room, and Double Sink Vanity
- Bench Seat in Entry with Built-In Cubbies, and Coat Closet
- Ceramic Tile Floors in Garage Entry, Baths, Powder Room, and Laundry Room
- 96%+ Efficient Heating/Cooling System for Superior Comfort and Efficiency

Second Floor



First Floor



*Dimensions shown are approximate and not final. All dimensions are subject to change prior to or during construction
© Copyright Patrick J. Morabito, AIA Architect. These drawings may not be reproduced in any form without written permission from Patrick J. Morabito, AIA Architect and Woodstone Custom Homes, Inc.*



585-586-0953