

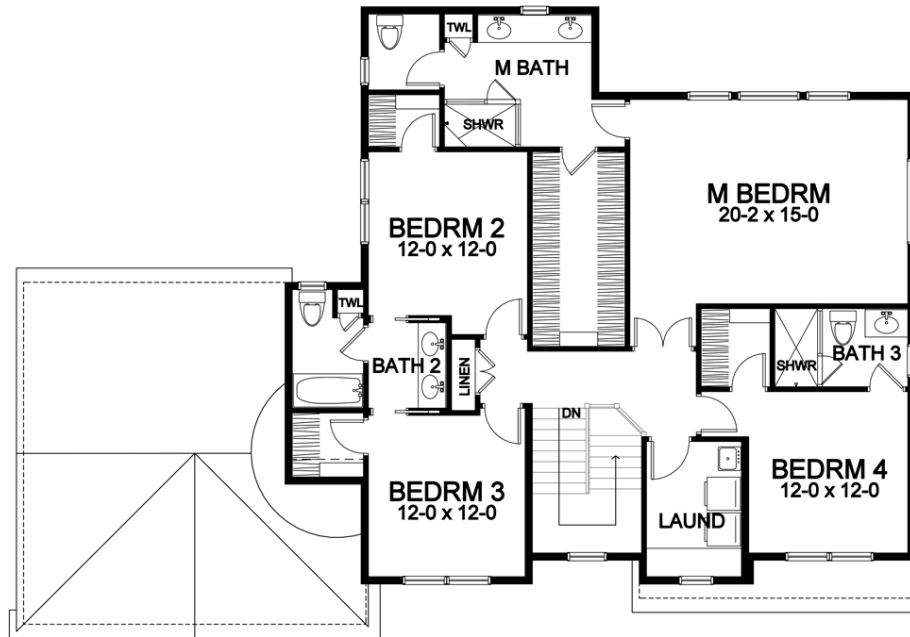
# *Lot 59 Stonington Ridge*



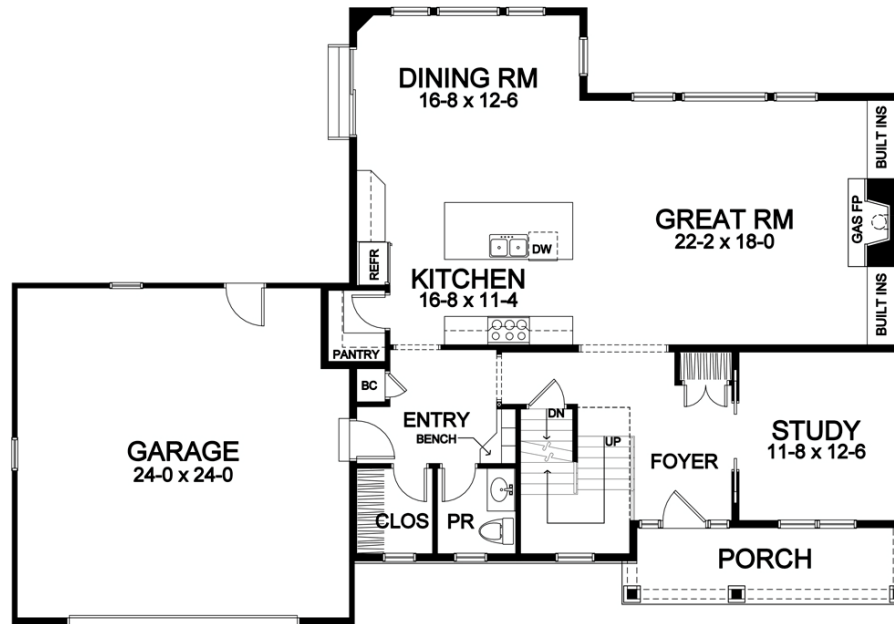
*2,746 Square Foot Two-Story*



Second Floor



First Floor



Dimensions shown are approximate and not final. All dimensions are subject to change prior to or during construction  
 © Copyright Patrick J. Morabito, AIA Architect. These drawings may not be reproduced in any form without written permission from Patrick J. Morabito, AIA Architect and Woodstone Custom Homes, Inc.

# STONINGTON RIDGE

*1083 Carrington Way (Lot 59)  
Plan Details*

- Square Footage:  
First Floor 1,343  
Second Floor 1,403  
Total 2,746
- Two Car Front-Load Garage
- 13-course basement
- Stone and Shake Accent Front
- Paving Stone Walk and Patio
- Four Bedrooms; 3-1/2 Baths
- Great Room with Gas Fireplace/Built-ins
- Study off Foyer
- Walk-in Pantry
- Large Dining Room Open to Kitchen and Great Room
- Hardwood Floors in Foyer, Kitchen, Dining Room, Great room, and Pantry
- Master Suite with Large Closet, Toilet Room, and Double Sink Vanity
- Bench Seat in Entry with Built-In Cubbies, and Coat Closet
- Ceramic Tile Floors in Garage Entry, Baths, Powder Room, and Laundry Room
- 96%+ Efficient Heating/Cooling System for Superior Comfort and Efficiency



585-586-0953