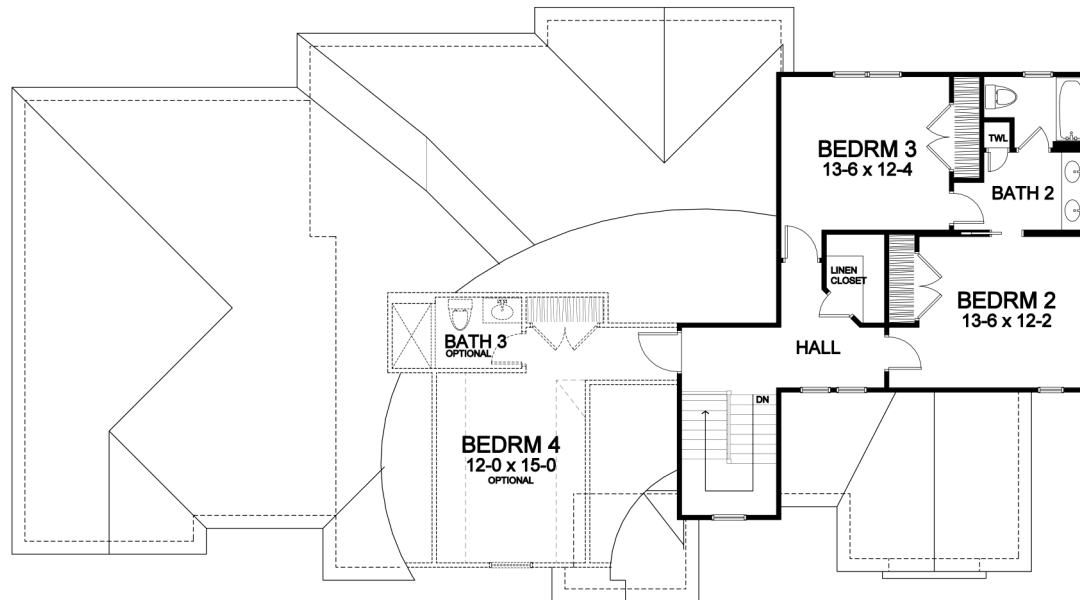


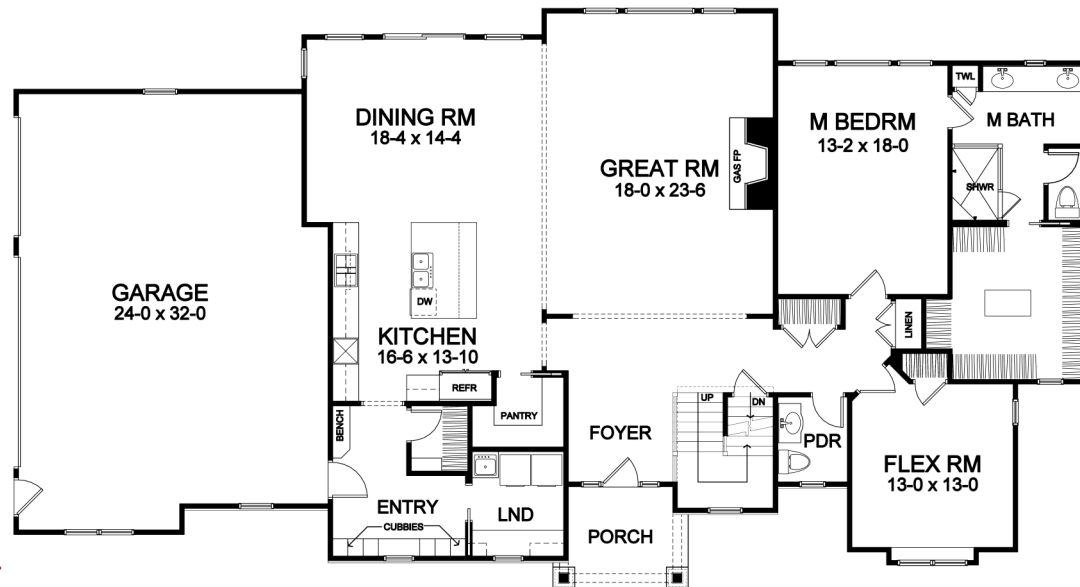


First Floor Master Portfolio Plan — 2,809

Woodstone Custom Homes, Inc. • 15 Fishers Road, Suite 202 • Pittsford, New York 14534 • homesbywoodstone.com



Second Floor



First Floor

Dimensions shown are approximate and not final. All dimensions are subject to change prior to or during construction
 © Copyright Patrick J. Morabito, AIA Architect. These drawings may not be reproduced in any form without written permission from Patrick J. Morabito, AIA Architect and Woodstone Custom Homes, Inc.

FF Master Portfolio Plan - 2,809 Plan Details

- Square Footage:
First Floor 2,168
- Second Floor 641
- Total 2,809
- Three Car Side-Load Garage
- Stone and Shake Accent Front
- Three Bedrooms; 2-1/2 Baths
- Great Room with Gas Fireplace
- First Floor Laundry Room
- Flex Room off Foyer
- Large Dining Room Open to Kitchen/GR
- Walk-in Pantry
- Hardwood Floors in Foyer, Kitchen, Dining Room, and Pantry
- Master Suite with Large Walk-in Closet, Toilet Room, and Double Vanity
- Bench Seat in Entry with Walk-in Closet, and Optional Built-in Cubbies
- Ceramic Tile Floors in Entry, Baths, Powder, and Laundry
- Optional 4th Bedroom and 3rd Bath
- 96%+ Efficient Heating/Cooling System for Superior Comfort and Efficiency



585-586-0953