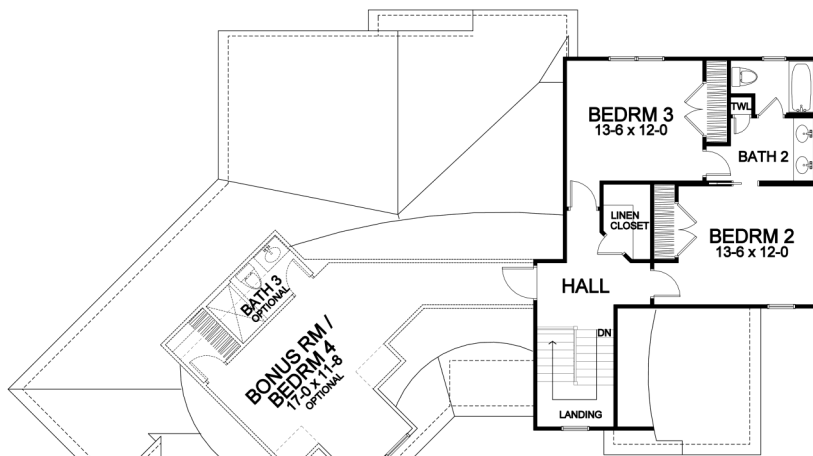




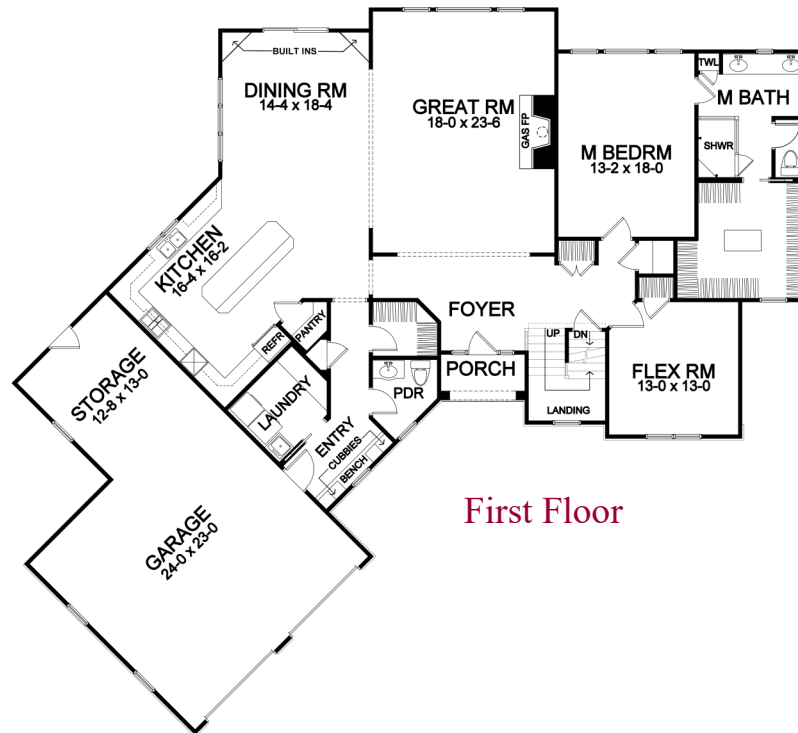
## ***First Floor Master Portfolio Plan — 2,800***

Woodstone Custom Homes, Inc. • 15 Fishers Road, Suite 202 • Pittsford, New York 14534 • [homesbywoodstone.com](http://homesbywoodstone.com)





Second Floor



First Floor

## FF Master Portfolio Plan - 2,800 Plan Details

- Square Footage:  
First Floor 2,187  
Second Floor 613  
Total 2,800
- Two Car Angle-Load Garage with Storage
- Stone and Shake Siding Accent Front
- Three Bedrooms; 2-1/2 Baths
- Great Room with Gas Fireplace
- Flex Room off Foyer
- First Floor Laundry Room
- Dining Room Open to Kitchen/GR, with Optional Built-ins
- Hardwood Floors in Foyer, Kitchen, Dining Room, and Walk-in Pantry
- Master Suite with Large Walk-in Closet, Toilet Room, and Double Vanity
- Bench Seat in Entry with Walk-in Closet, and Optional Built-in Cubbies
- Ceramic Tile Floors in Entry, Baths, Powder Room, and Laundry
- Optional High Ceilings in GR, Flex Room
- Optional 4th Bedroom and 3rd Bath
- 96%+ Efficient Heating/Cooling System for Superior Comfort and Efficiency

Dimensions shown are approximate and not final. All dimensions are subject to change prior to or during construction  
© Copyright Patrick J. Morabito, AIA Architect. These drawings may not be reproduced in any form without written permission from Patrick J. Morabito, AIA Architect and Woodstone Custom Homes, Inc.



585-586-0953