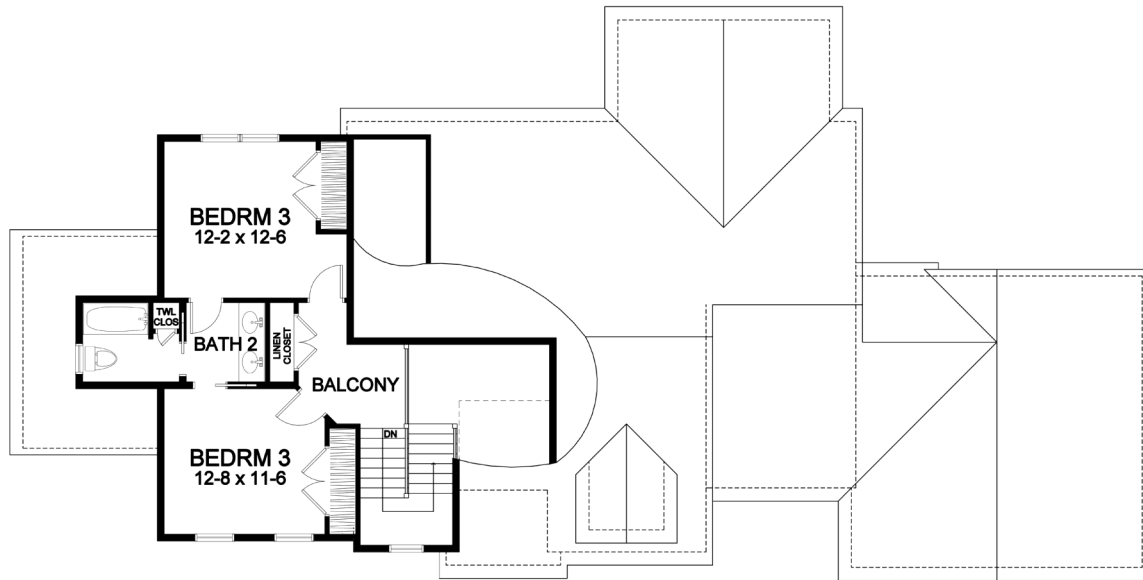




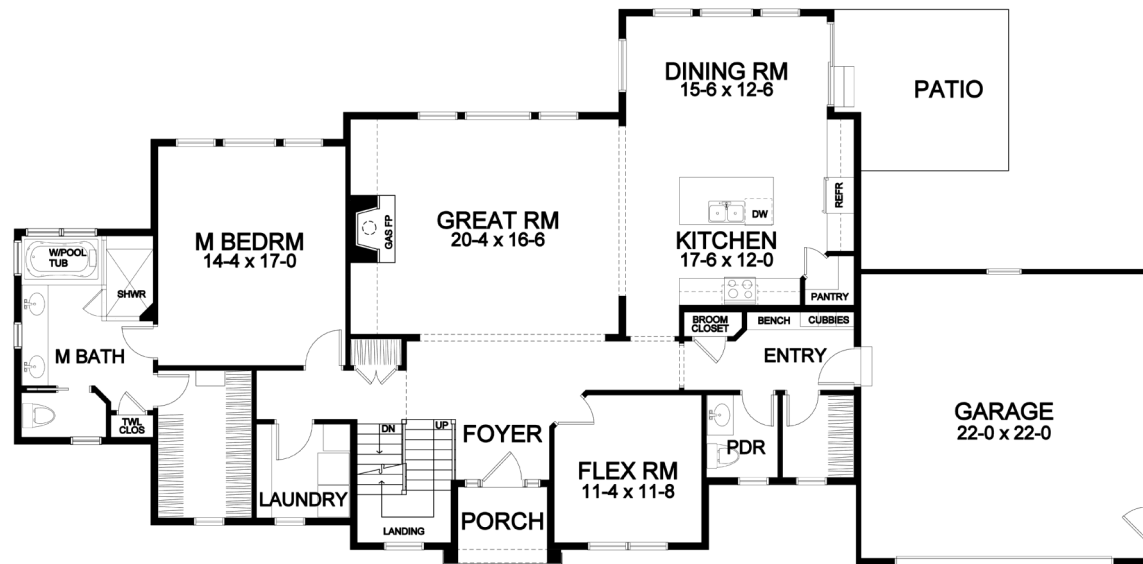
## *First Floor Master Portfolio Plan — 2,390*

Woodstone Custom Homes, Inc. • 15 Fishers Road, Suite 202 • Pittsford, New York 14534 • [homesbywoodstone.com](http://homesbywoodstone.com)





Second Floor



First Floor

*Dimensions shown are approximate and not final. All dimensions are subject to change prior to or during construction  
 © Copyright Patrick J. Morabito, AIA Architect. These drawings may not be reproduced in any form without written  
 permission from Patrick J. Morabito, AIA Architect and Woodstone Custom Homes, Inc.*

## ***FF Master Portfolio Plan - 2,390 Plan Details***

- Square Footage:  
First Floor 1,860
- Second Floor 530
- Total 2,390
- Two Car Front-Load Garage
- Stone and Shake Accent Front
- Three Bedrooms; 2-1/2 Baths
- Great Room with Gas Fireplace
- High Ceiling Foyer, with Balcony Overlook
- First Floor Laundry Room
- Flex Room off Foyer
- Dining Area Open to Kitchen/Great Room
- Hardwood Floors in Foyer, Kitchen, Dining Room, and Pantry
- Master Suite with Walk-in Closet, Toilet Room, Double Vanity, and Whirlpool
- Built-in Bench in Entry, with Optional Built-in Cubbies
- Ceramic Tile Floors in Entry, Baths, Powder Room, and Laundry
- Optional High Ceilings in Kitchen/Dining Room, Flex Room, and Great Room
- 96%+ Efficient Heating/Cooling System for Superior Comfort and Efficiency



**585-586-0953**