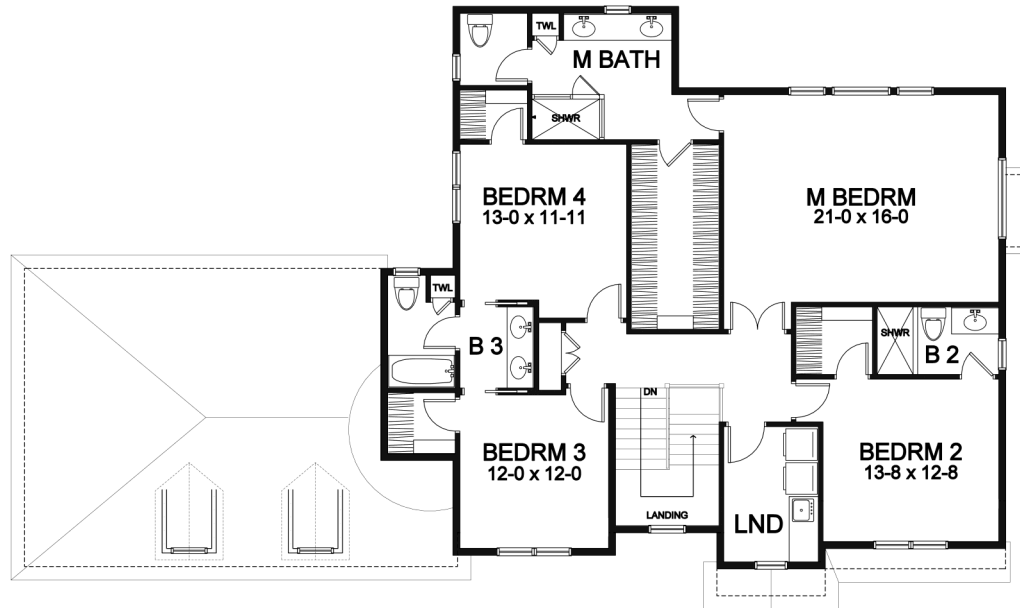


Lot 56 Stonington Ridge

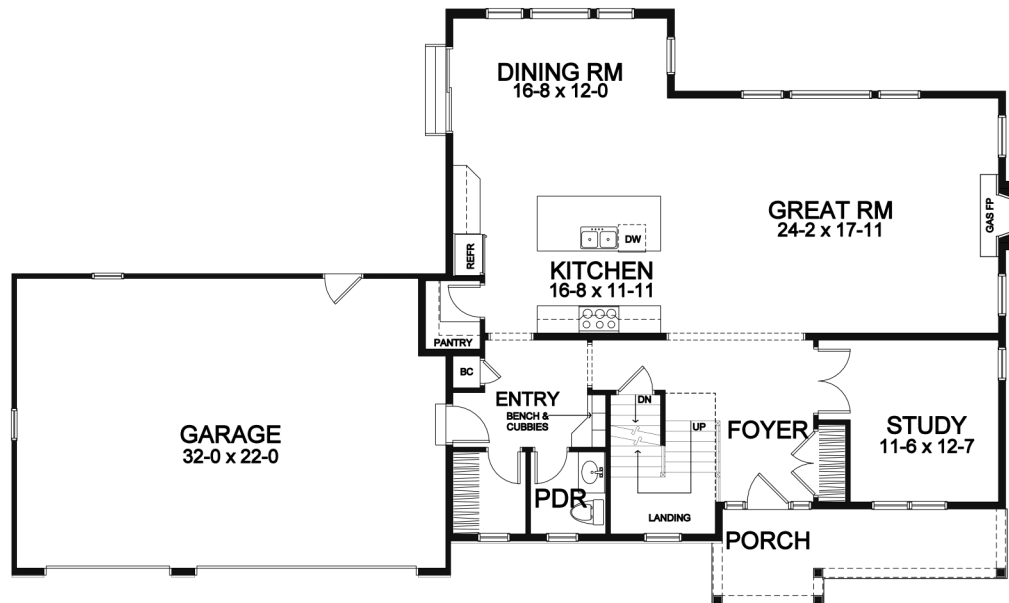


2,905 Square Foot Two Story Home

Second Floor



First Floor



Dimensions shown are approximate and not final. All dimensions are subject to change prior to or during construction
 © Copyright Patrick J. Morabito, AIA Architect. These drawings may not be reproduced in any form without written permission from Patrick J. Morabito, AIA Architect and Woodstone Custom Homes, Inc.

STONINGTON RIDGE

*1091 Carrington Way (Lot 56)
Plan Details*

- Square Footage:
First Floor 1,415
Second Floor 1,490
Total 2,905
- Three Car Front-Load Garage
- Stone and Shake Accent Front
- Four Bedrooms; 3-1/2 Baths
- Great Room with Gas Fireplace
- Study off Foyer;
- Walk-in Pantry
- Second Floor Laundry
- All Bedrooms have Walk-in Closets
- Large Dining Room Open to Kitchen and Great Room
- Hardwood Floors in Foyer, Kitchen, Dining Room, Great room, and Pantry
- Master Suite with Extra Large Closet, Toilet Room, and Double Sink Vanity
- Bench Seat in Entry with Walk-in Closet, and Built-in Cubbies
- Ceramic Tile Floors in Entry, Baths, Powder Room, and Laundry Room
- 96%+ Efficient Heating/Cooling System for Superior Comfort and Efficiency



585-586-0953